



WEE CAMP

Workplace Experience Exchange Camp

 THE
ORCHARD
FOUNDATION

Funded by:



THE RAPIDES FOUNDATION

WEE CAMP ELEMENTARY
JUNE 27-30, 2022

www.theorchardfoundation.org

www.rapidesfoundation.org

WHY WEE CAMP

GOAL

The goal of the Workplace Experience Exchange Camp is to provide experiences for educators to learn through direct, hands-on experience about trends, skill requirements, and opportunities in Central Louisiana.

APPROACH

Each summer in Central Louisiana, a select group of public school educators attend a one-week sneak peek into the region's high-demand, high-wage jobs. Through talks and tours coordinated by The Orchard Foundation, educators are immersed in the worlds that their students will enter one day as credentialed and degreed workers. WEE Camp is often the first time that educators step into the workplace and learn about the careers and work environments that their students will encounter. The aim is to cultivate a broader, global mindset among educators that they can instill in their students.

WEE Camp also connects them to real-world workforce trends and requirements. At camp, cohorts of educators are hosted by local employers, touring different employer sites and learning about what it takes to be successful in each workplace. Company representatives share their industry's trends and their workforce needs, and then drill down into what sorts of skills and characteristics they are seeking in future employees. On the jobsite, the educators study the competencies that their students will need to thrive in those jobs.

OUTCOMES

Educators leave WEE Camp with first-hand knowledge of the workforce issues facing employers in Central Louisiana. They emerge with the confidence that they can tailor their classroom practice to incorporate the new knowledge they acquired. They are better equipped to teach their students to build new proficiencies, not only in content, but also in skills such as problem-solving, leadership, and collaboration with an emphasis on real-world applications.

WEE CAMP ELEMENTARY



Participating Schools

Allen Parish

Oakdale Elementary School

Natchitoches Parish

Fairview Alpha Elementary School

Rapides Parish

Glenmora High School

JL Barron Elementary School

Ball Elementary School

Alma Redwine Elementary School

Vernon Parish

Pickering Elementary School

Parkway Elementary School

West Leesville Elementary School

Pitkin High School

Winn Parish

Atlanta High School

HISTORY



In its seventh year, WEE Camp - Central Louisiana's first industry externship program - has served 228 educators in Cenla.



WEE CAMP I Starts

In 2015, WEE Camp was established by The Orchard Foundation, serving nine parishes. It has since expanded into multiple events with increased engagement by partners.



WEE CAMP II Emerges

In 2016, WEE Camp II was born to offer educators a more in-depth experience with a smaller number of industry partners.



VEE Camp (Virtual)

In 2017, The Orchard Foundation developed and implemented VEE Camp in partnership with the LA Department of Education. VEE Camp provided a model for statewide implementation. When COVID precautions caused WEE Camp to go virtual, the virtual model was utilized again.



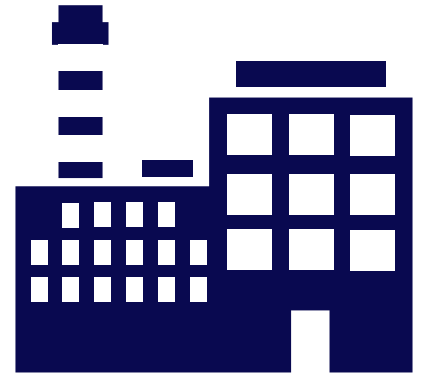
WEE Camp Elementary

In 2022, WEE Camp added a novel option for K-6 educators. WEE Camp Elementary, the newest iteration of WEE Camp, launched with 20 educators from 11 schools.

HOW WE DO IT

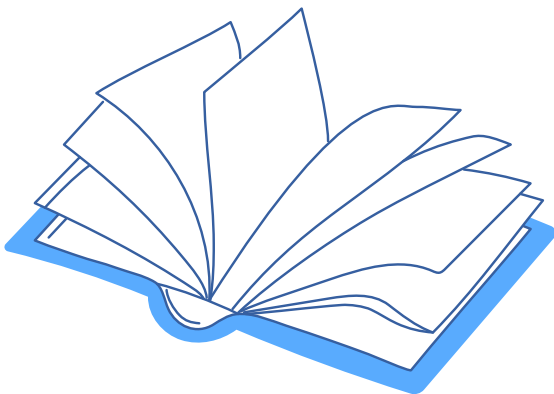
INDUSTRY PARTNERSHIPS

WEE Elementary educators were connected to 9 regional employers. From manufacturing to healthcare, to military and the energy industry, many of Cenla's key industries were represented.



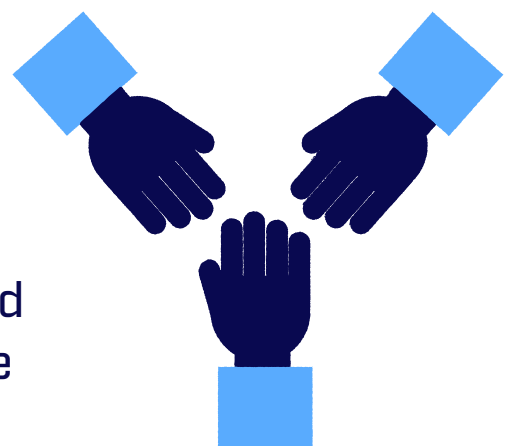
EDUCATORS

20 elementary grade educators were accepted to WEE Camp I 2022, representing 11 public schools in five school districts.



COLLABORATION

Educators forge connections with industry and gain practical knowledge of the workplace. They bring their real-world experiences back into classrooms for the benefit of the students.



WEE IMPACT ON EDUCATORS

Connections to classroom subject matter

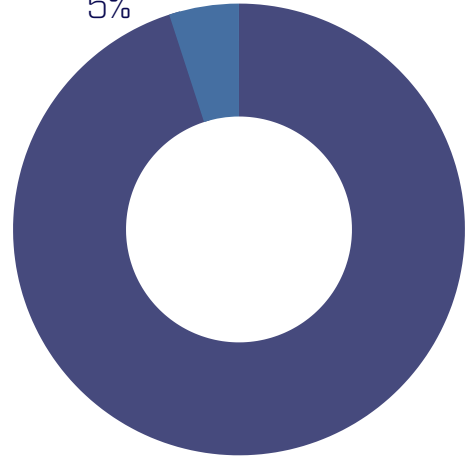
Somewhat Agree
26%



Agree
74%

Increased awareness of employer requirements

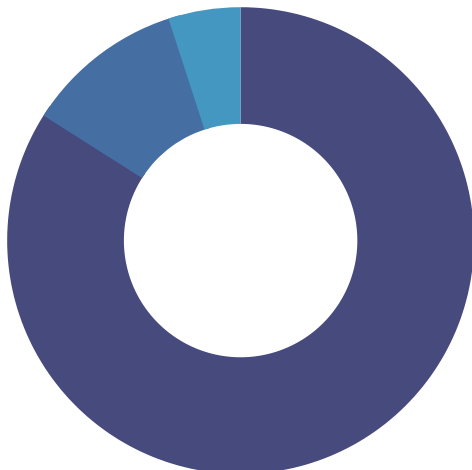
Somewhat Agree
5%



Agree
95%

Identified ways to incorporate skill requirements into classroom

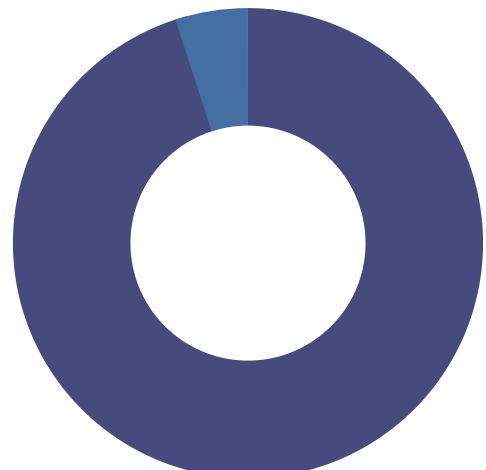
Somewhat Agree
11%



Agree
84%

Increased awareness of programs and jobs in region

Somewhat Agree
5%



Agree
95%

WEE CAMP FEEDBACK



I have been wanting to show my students that they don't have to go far away to live successful and fulfilling lives. I can use my knowledge to encourage the students who don't want to or don't have the means to move to pursue better opportunities. This week has been GREAT!!!

I have gained so much knowledge and information about the jobs that are available in Central LA and the skills needed to be successful in these careers. Almost all of the jobs required skills in math and science, so I have work to do. I can make what we are doing in class relate to real life. This camp will help me answer the question of "When are we going to use this?"



In our third grade social studies curriculum, we discuss jobs and products in Louisiana. I will definitely reach out to the companies I encountered during WEE Camp.

WEE Camp has really opened my eyes and given me an awareness of the industries that we have in our area.



This experience will change what I teach when I return to school. There is a whole unit about entrepreneurship, hard work, and pursuing success and job opportunities that fit your passions and interests.

I thought all of the job site presentations were great. They were geared toward helping elementary students understand how their educational objectives and learning can fit into any of the career paths taught at WEE Camp.



INDUSTRY PARTNERS

THANK YOU!

